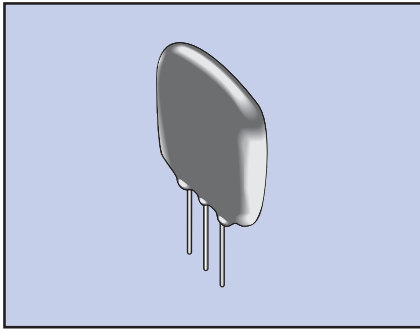


L10.7 SERIES CERAMIC FILTER



The L10.7 Series ceramic filter is for FM use.

FEATURES

- FM use

OPERATING CONDITIONS/ELECTRICAL CHARACTERISTICS

PART NUMBER	3dB BAND WIDTH (KHz) MIN.	20dB BAND WIDTH (KHz) MAX.	INSERTION LOSS (dB) MAX.	SPURIOUS (dB) MIN. (9-12 MHz)
L10.7 MA20 □	330 ±50	680	6	30
L10.7 MA5 □	280 ±50	650	6	30
L10.7 MS2 □	230 ±50	600	6	40
L10.7 MS3 □	180 ±50	520	7	40
L10.7 MJ □	150 ±50	400	10	35
L10.7 MH □	110 ±50	350	10	30

() = Typical values, input/output impedance: 330 Ohms, FO tolerance ±30 KHz.

□ = Indicator (FO), Complete part number to include indicator i.e. L10.7 MA5C (C=10.73 MHz)

COLOR SPECIFICATIONS

SPECIFICATION (F ₀) MHz	10.64	10.67	10.7	10.73	10.76
INDICATOR	D	B	A	C	E
COLOR	Black	Blue	Red	Orange	White

PACKAGE DIMENSIONS (mm)

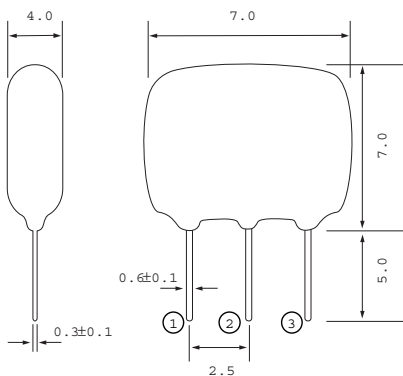


Figure 1) L10.7 - Front & Side views

- Connection
- ① In/Out
 - ② Ground
 - ③ Out/In

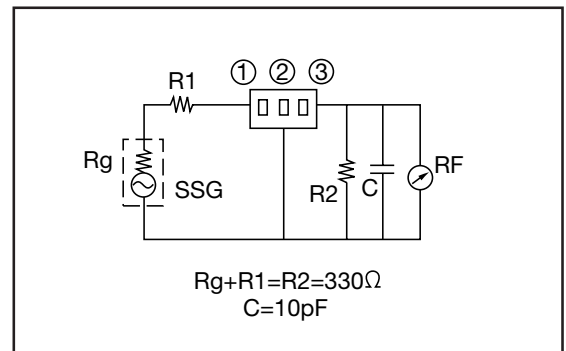


Figure 2) Test Circuit